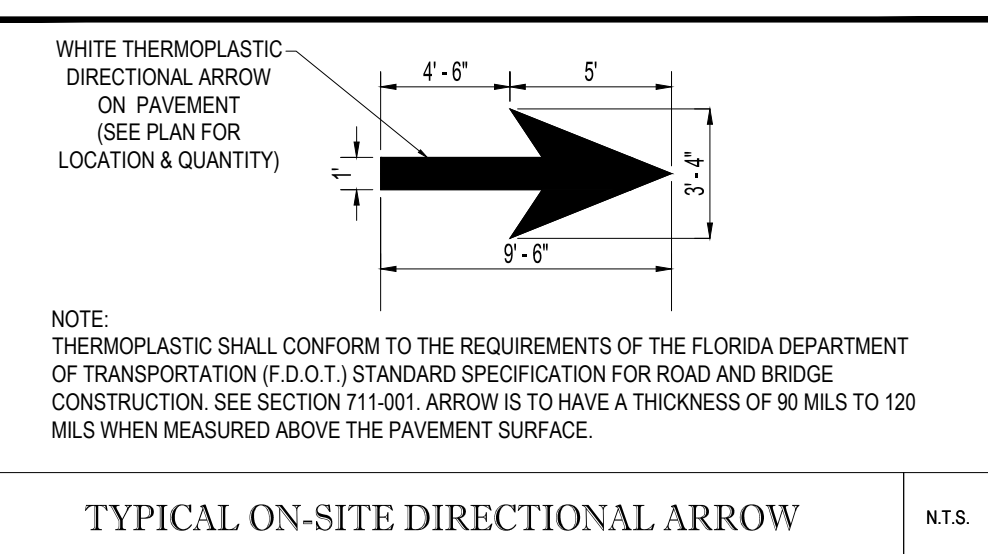
[illegible]

C-12.1

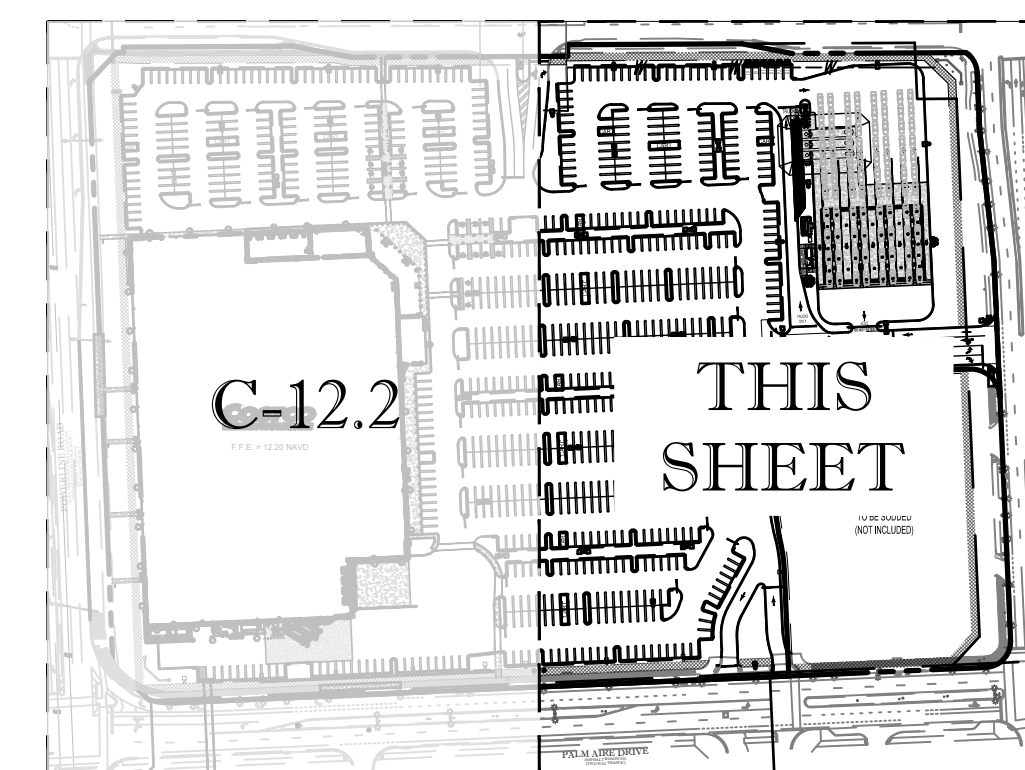


R1-1	STOP SIGN (30"x30"/ 36"x36" WHERE NOTED)
R5-1	DO NOT ENTER SIGN
FTP 21-06	ACCESSIBLE PARKING SIGN
D.Y.	DOUBLE YELLOW
W	WHITE
Y	YELLOW
*	THERMOPLASTIC

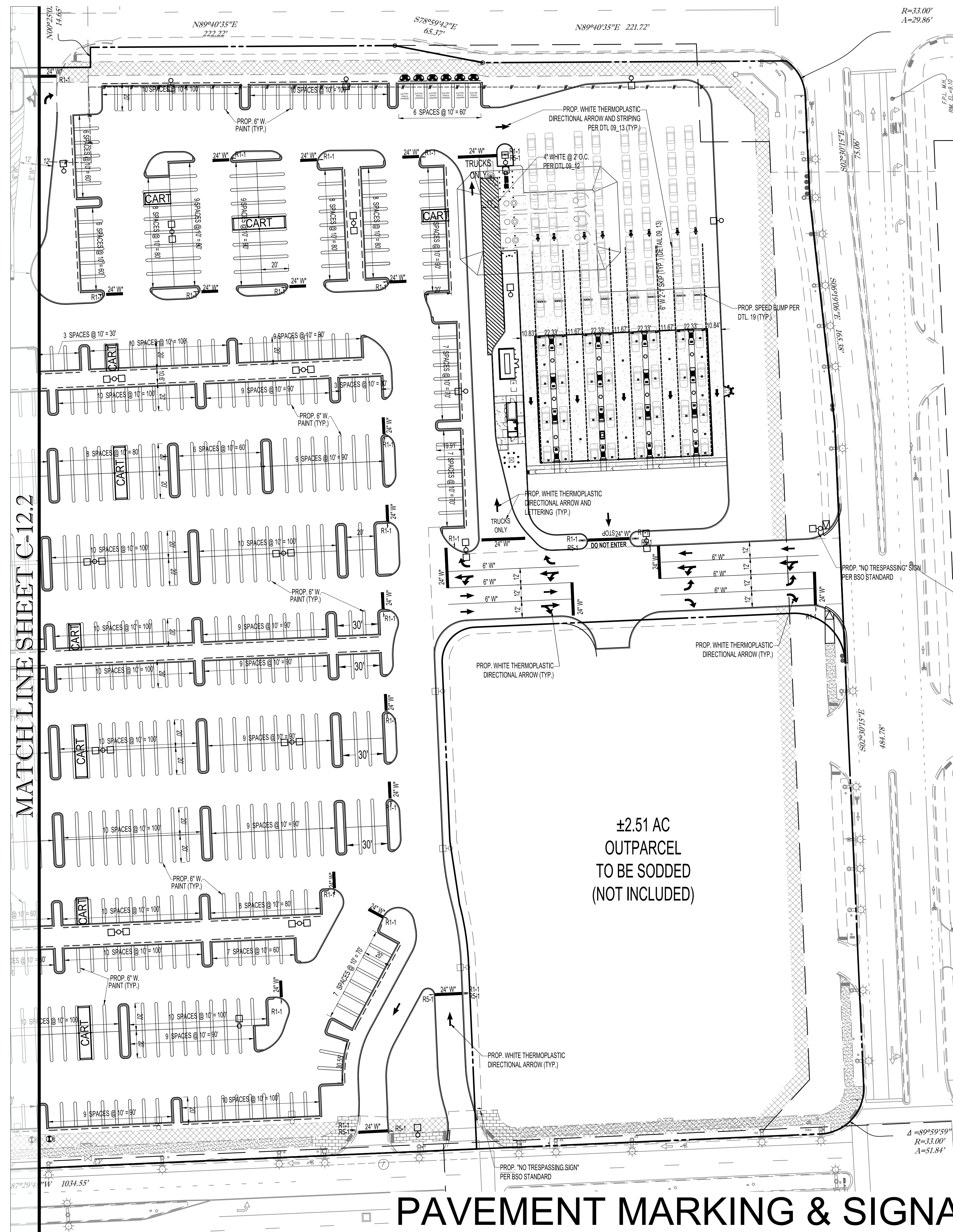


STOP SIGN SIGNAGE NOTE:

1. PER THE MUTCD, WHERE A STOP SIGN (R1-1) IS BACK-TO-BACK WITH A DO NOT ENTER SIGN (R5-1), THE DO NOT ENTER SIGN (R5-1) MUST FIT INSIDE THE BORDER OF THE STOP SIGN (R1-1). AS SUCH, WHERE THIS OCCURS THE STOP SIGN (R1-1) IS TO BE 36" x 36".



KEY MAP

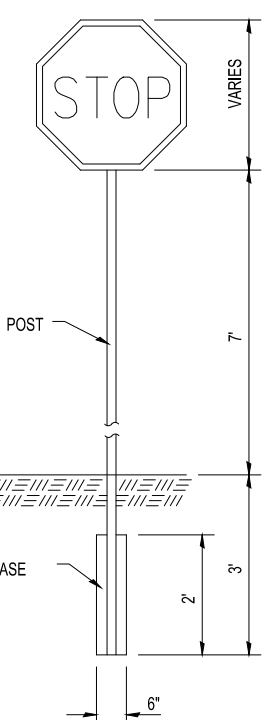


±2.51 AC
OUTPARCEL
TO BE SODDED
(NOT INCLUDED)

PAVEMENT MARKING & SIGNAGE PLAN (EAST)

OCT. 29, 2025

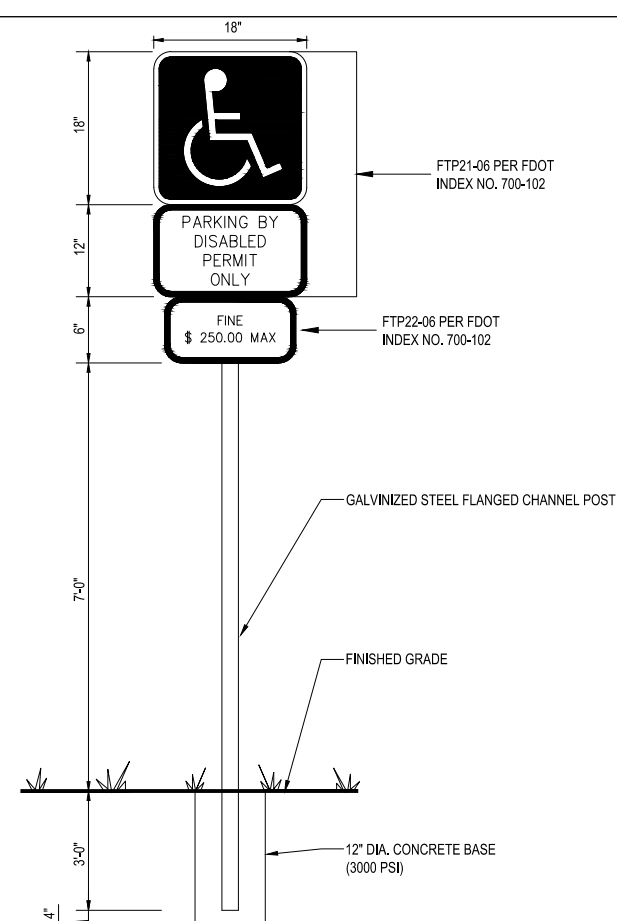
MATCH LINE SHEET C-12.2



NOTES:

1. POST - STEEL FLANGED CHANNEL WITH BAKED GREEN ALKID PER A.S.T.M. - A124 WITHOUT ANCHOR PLATES.
2. CONCRETE BASE SHALL BE 2,000 PSI CONCRETE.
3. SIGN TO CONFORM TO MUTCD R1-1 (DIAMOND GRADE), UNLESS OTHERWISE SPECIFIED ON THE PLAN.

1	STOP SIGN - DETAIL
	SCALE: NONE



NOTES
1. REFER TO FDOT 700-102

2 ACCESSIBLE PARKING SIGN
SCALE: NONE

DRC

PZ25-12000023
12/03/2025

POMPANO BEACH, FLORIDA